

BELTRAMI

MADE IN ITALY

## Protective masks



**Model 1**

SIZE

Gents • Ladies



**Model 3**

SIZE

Gents • Ladies

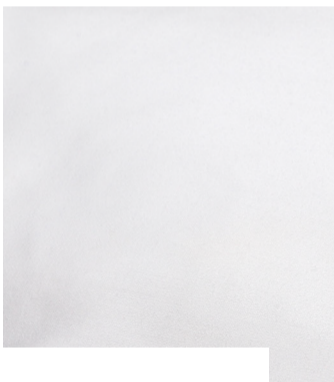


**Model 4**

SIZE

Gents • Ladies • Children

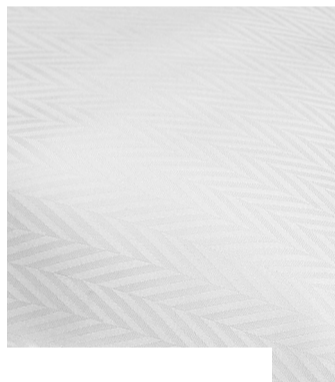
## Patterns



**Katia**

COLOURS

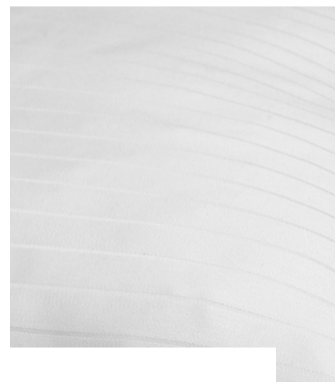
white  
 ivory  
 silver  
 dark grey



**Herringbone**

COLOURS

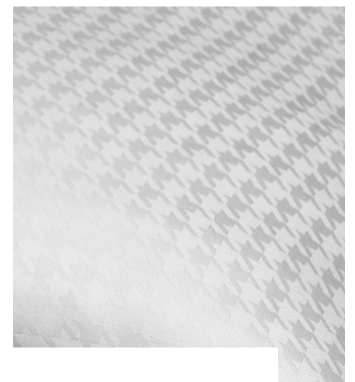
white  
 ivory



**Caravaggio**

COLOURS

white  
 ivory



**Riverton**

COLOURS

white  
 ivory  
 silver

## Technical details



### Protective masks

Fabric: 100% Autentica Fibra di Legno Beltrami (wood fiber).



### Filter - option 1

Disposable triple layer non-woven fabric in compliance with the current directives and regulations\*\*\*.

### Filter - option 2

100% cotton, in compliance with the current directives and regulations. Reusable after appropriate sanitification\*\*\*.

The new protective masks and filters are not sterile. The protective masks are not certified.

\*\*\*Further details upon request.

[export@beltrami.it](mailto:export@beltrami.it)